

**BOMAX**®

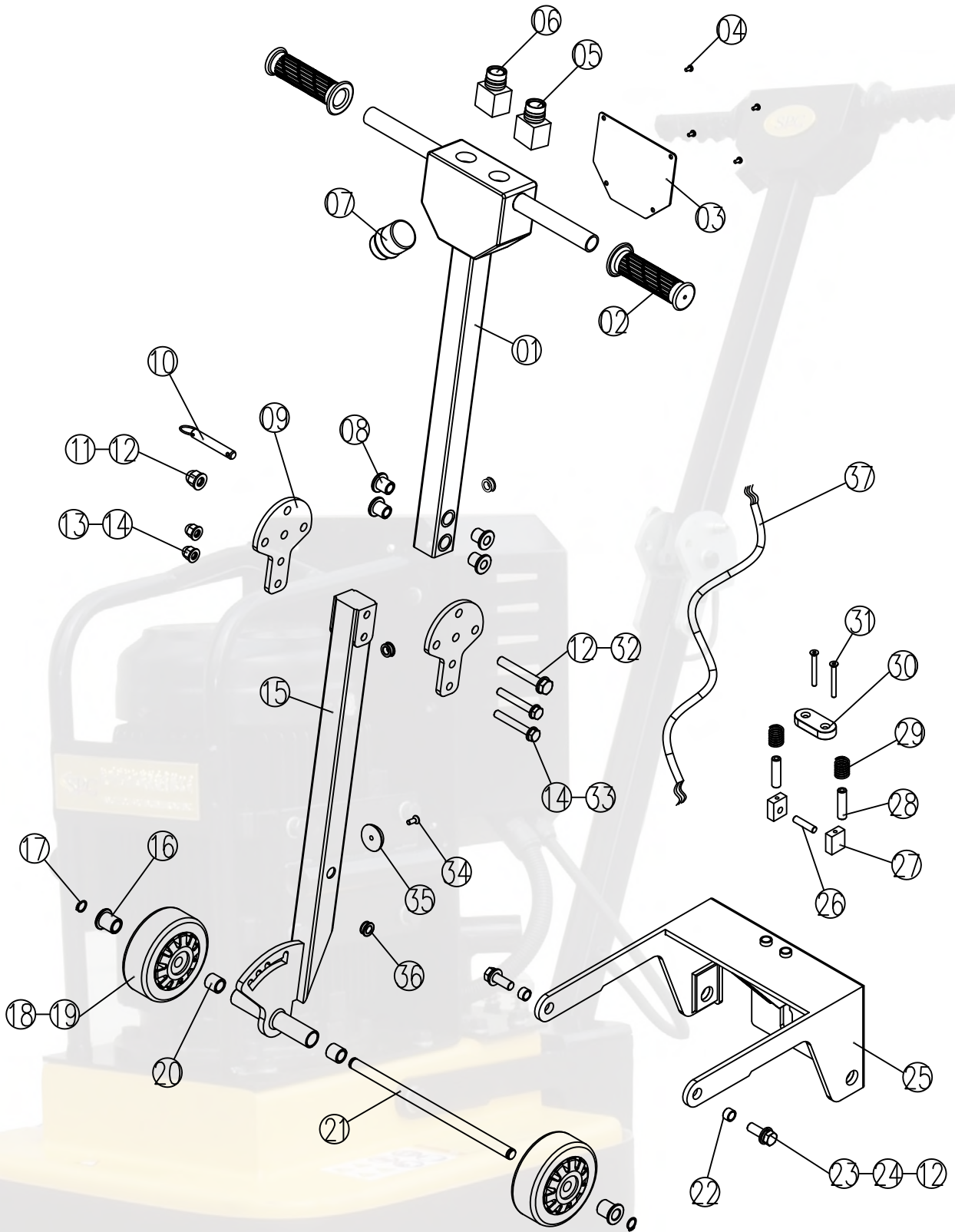
## **BMGM-19B PARTS LIST**



**HANGZHOU SPG ENGINEERING LTD.**

Ver.02 2011

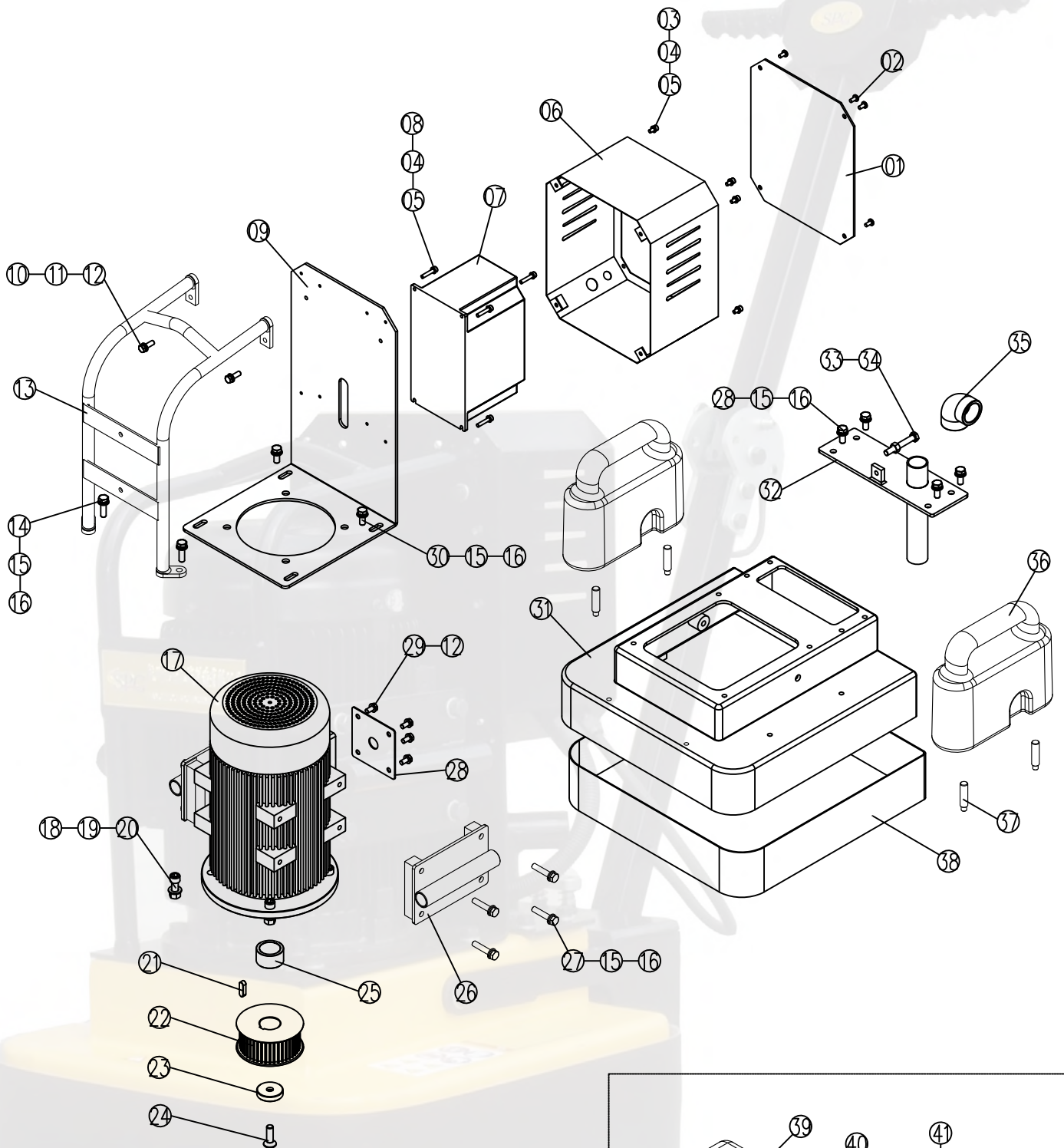
GM19B Parts List  
GM19B-02, 03 Handle Assy.



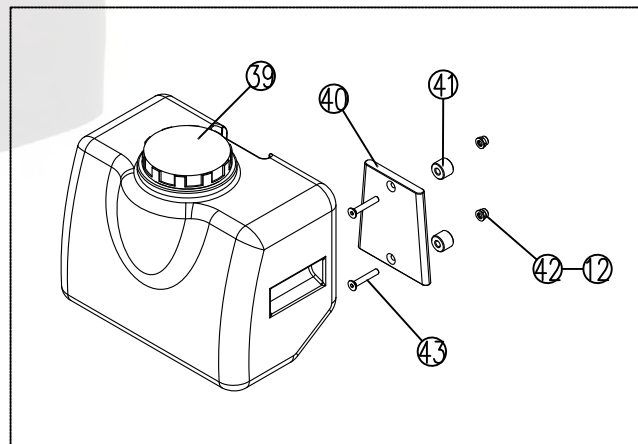
## GM19B-02, 03 Handle Assy.

Ref No.	Parts No.	Description	QTY	Units price(\$)
1	GM19B-02-001	upper handle welding assy.	1	
2	103-02-001	rubber handle cover	2	
3	GM19B-02-002	cover	1	
4	100-06-002Z	M4X8 cross solts cap head screw	4	
5	101-04-001	starter button	1	
6	101-04-002	emergency stop switch	1	
7	101-04-003	speed adjust	1	
8	GM19B-02-005	plastic bushing	4	
9	GM19B-02-006	side mount plate	2	
10	GM19B-02-008	lock pin	1	
11	100-20-001Z	M12 self lock nut	1	
12	100-23-001Z	ø12 plate washer	4	
13	100-20-002Z	M10 self lock nut	2	
14	100-24-005Z	ø10 plate washer	4	
15	GM19B-02-004	button handle welding assy.	1	
16	GM19B-03-003	wheel shaft bushing	2	
17	100-25-001	ø15 shaft lock	2	
18	100-47-001	wheel	2	
19	100-34-001	6202bearing	4	
20	GM19B-02-003	nylon bushing	2	
21	GM19B-03-002	wheel shaft	1	
22	GM19B-03-009	bushing of wheel frame	2	
23	100-01-001Z	M12X35 hex bolt	2	
24	100-24-001Z	ø12 spring washer	2	
25	GM19B-03-001	wheel frame welding assy	1	
26	GM19B-03-008	lock pin	1	
27	GM19B-03-007	lock block	2	
28	GM19B-03-005	slide guide	2	
29	GM19B-03-006	return spring	2	
30	GM19B-03-004	handle adjust padel	1	
31	100-04-005B	M6X60 inner hex sunk bolt	2	
32	100-01-010B	M12X80 hex bolt	1	
33	100-03-003B	M10X75 hex bolt	2	
34	100-04-008	M6X20 inner hex sunk screw	2	
35	GM19B-02-007	rubber support	1	
36	103-07-004	rubber seal	3	
37	105-03-003	wire(2 meter)	1	

GM19B Parts List  
GM19B-04 Base Assy.



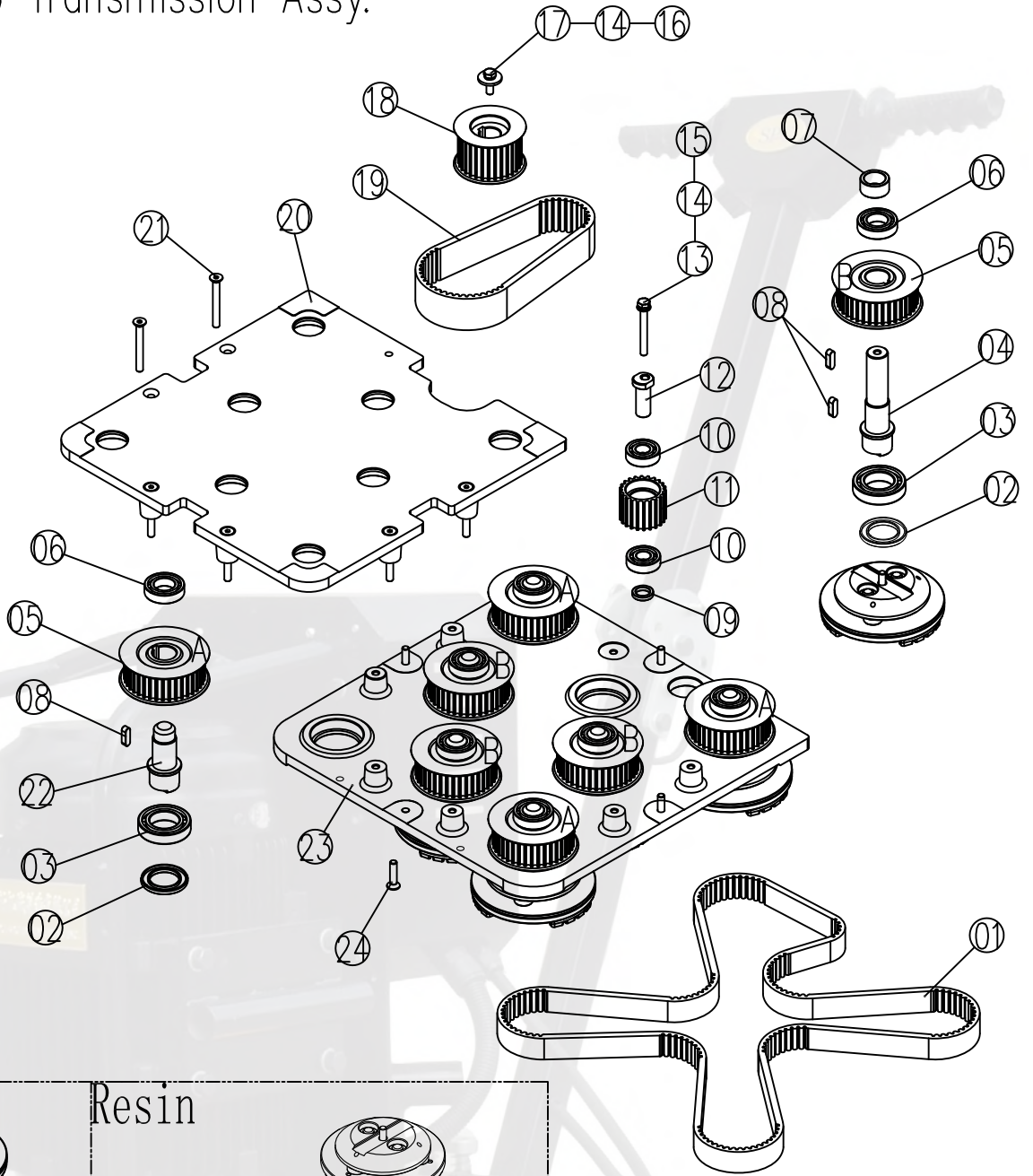
Water Tank is an option



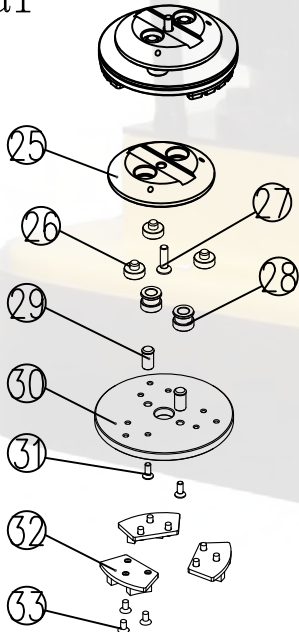
## GM19B-04 Base Assy.

Ref No.	Parts No.	Description	QTY	Unit price(\$)
1	GM19B-04-008	cover of control box	1	
2	100-06-003Z	M6X8 cross slots head screws	4	
3	100-03-001	M6X12 hex socket cap head screw	4	
4	100-24-003	φ6 spring washer	4	
5	100-23-002Z	φ6 plate washer	8	
6	GM19B-04-004	control box body	1	
7	101-02-001	motor control	1	
8	100-03-006	M6X16 cross slots semicircle screws	4	
9	GM19B-04-003	motor base plate	1	
10	100-01-002	M8X25 hex bolt	2	
11	100-24-002	φ8 spring washer	2	
12	100-23-003Z	φ8 plate washer	2	
13	GM19B-04-009	motor protect frame	1	
14	100-01-011	M10*30 hex bold	2	
15	100-24-004	φ10 spring washer	16	
16	100-23-006Z	φ10 plate washer	16	
17	101-01-001	motor	1	
18	100-03-003	M12X35 hex sunk head screw	4	
19	100-23-001Z	φ12 plate washer	4	
20	100-20-001Z	M12 self lock nut	4	
21	100-32-001	10 keyway	1	
22	GM19B-04-005	teeth wheel of motor(44teeth)	1	
23	GM19B-04-010	retainer	1	
24	100-03-003	M12X35 hex socket cap head screw	1	
25	GM19B-04-006	motor retainer	1	
26	GM19B-04-015	carry bar base	2	
27	100-01-012	M10X50 hex bolt	8	
28	GM19B-04-007	motor cover plate	1	
29	100-01-006	M8X16 hex bolt	4	
30	100-01-005	M10X25 hex bolt	6	
31	GM19B-04-001	base welding assy.	1	
32	GM19B-04-002	vacuum exhaust assy.	1	
33	100-01-004	M10X70全牙六角螺栓	1	
34	100-18-001Z	M10 nut	1	
35	GM19B-04-011	deflector	1	
36	GM19B-04-012	additional weight	2	
37	GM19B-04-013	additional weight lock pin	4	
38	103-09-002	water proof	1	
39	PH40-02-010	water tank	1	
40	SPX17-02-002	base of water tank	1	
41	GM19B-04-014	washer	2	
42	100-20-003Z	M8 self lock nut	2	
43	100-04-010	M8X50 hex socket cap head screw	2	

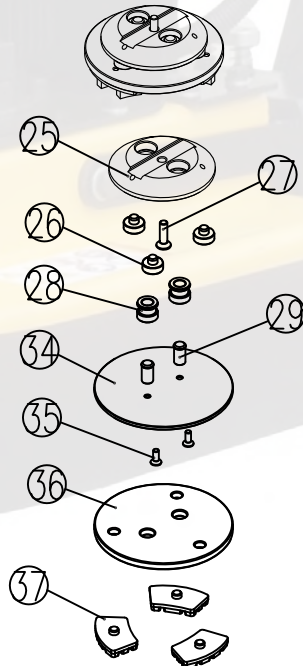
GM19B Parts List  
 GM19B-05, 06 Transmission Assy.



Metal



Resin



**GM19B-05,06 Transmission Assy.**

Ref No.	Parts No.	Description	QTY	Unit price(\$)
1	100-41-001	synchronism belt	1	
2	100-39-001	seal	8	
3	100-35-006	6007 bearing	8	
4	GM19B-05-003	shaft of teeth wheel B	1	
5	GM19B-05-005	teeth wheel(38 teeth)	8	
6	100-35-005	6005 bearing	8	
7	GM19B-05-010	retain of teeth wheel B	1	
8	100-32-002	keyway	9	
9	GM19B-05-008	washer of tension wheel	1	
10	100-35-007	6203 bearing	2	
11	GM19B-05-006	tension teeth wheel	1	
12	GM19B-05-007	shaft of tension wheel	1	
13	100-01-007B	M8X80 hex bolt	1	
14	100-24-002	ø8 spring washer	2	
15	100-23-003Z	ø8 plate washer	1	
16	100-01-002	M8X25 hex bolt	1	
17	GM19B-05-004	ø8 washer (外Φ32*Φ8.5*T5MM)	1	
18	GM19B-05-011	teeth wheel(30teeth)	1	
19	100-41-002	8M synchronism belt	1	
20	GM19B-05-009	upper base plate	1	
21	100-01-007B	M8X60 inner hex sunk bolt	6	
22	GM19B-05-002L	shaft of teeth wheel	4	
	GM19B-05-002		3	
23	GM19B-05-001	bottom base plate	1	
24	100-04-004	M8X35 inner hex sunk bolt	4	
25	GM19B-06-001	polish pad disc	8	
26	GM19B-06-006	soft plate retain D1	24	
27-L	100-04-007Z	M8X30 inner hex sunk bolt(left)	4	
27-R	100-04-002	M8X30 inner hex sunk bolt(right)	4	
28	GM19B-06-005	soft plate retain guide C1	16	
29	GM19B-06-004	position pin	16	
30	GM19B-06-008	polish disc B	8	
31	100-04-009	M6X20 inner hex sunk screw	16	
32	GM19B-06-009	Metal blades	24	
33	100-04-008	M5X12 inner hex sunk screw	72	
34	GM19B-06-002	polish disc A	8	
35	100-04-012	M6X16 inner hex sunk screw	16	
36	GM19B-06-003	soft plate	8	
37	GM19B-06-007	resin blades	24	